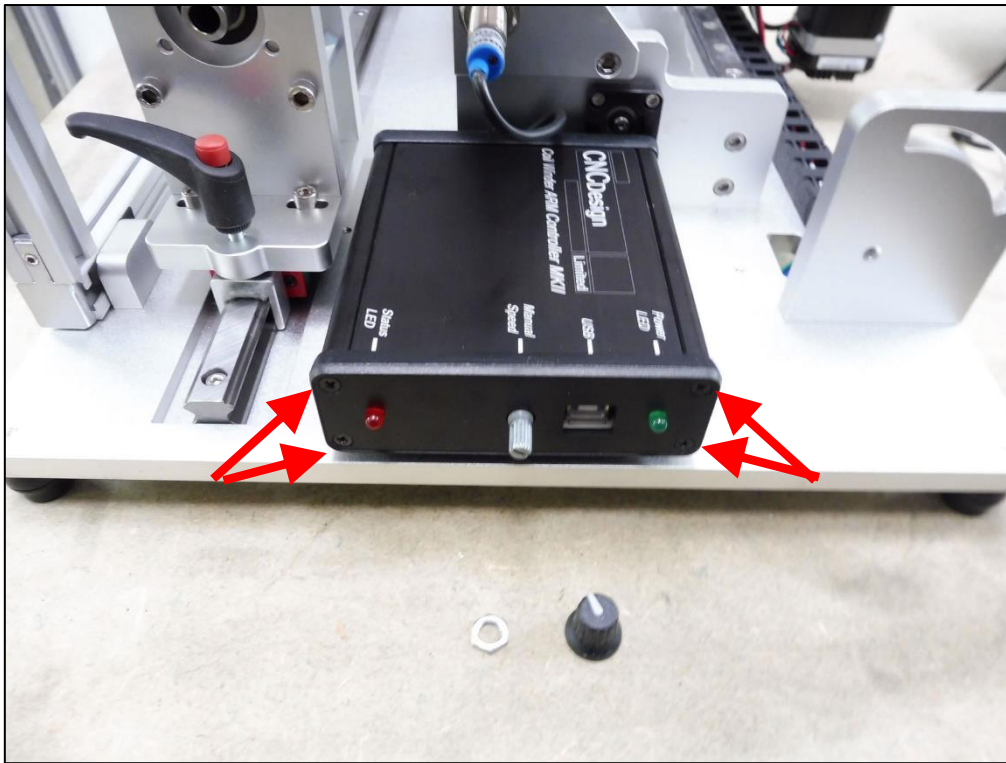


UPGRADING FIRMWARE

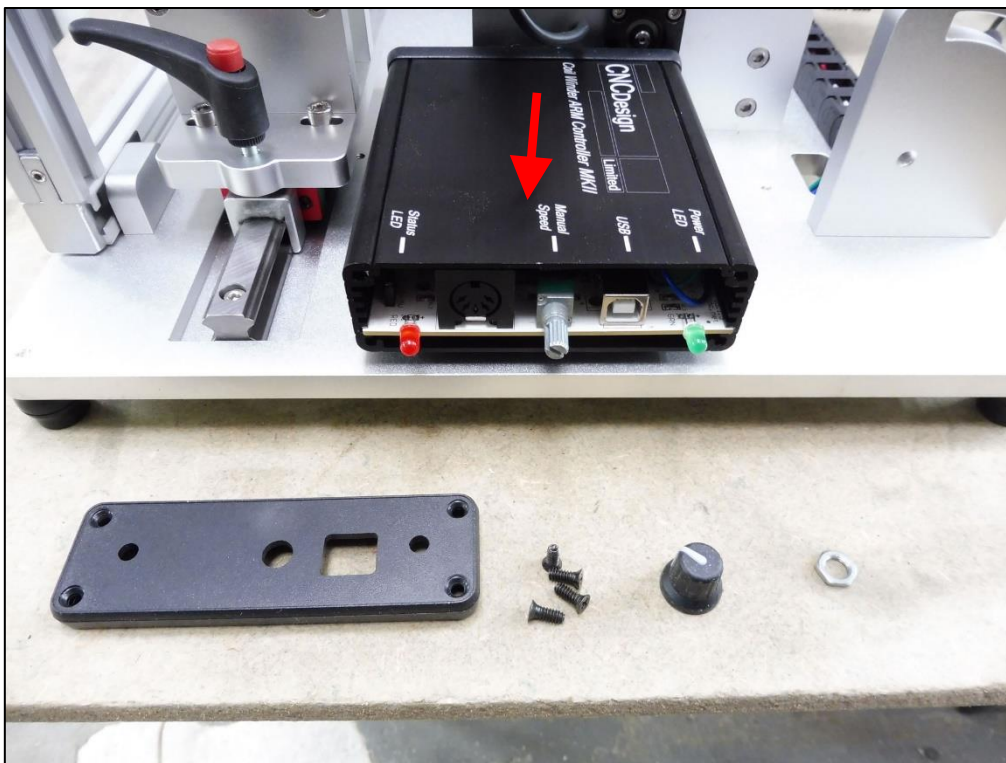
Connecting the JTAG Programmer



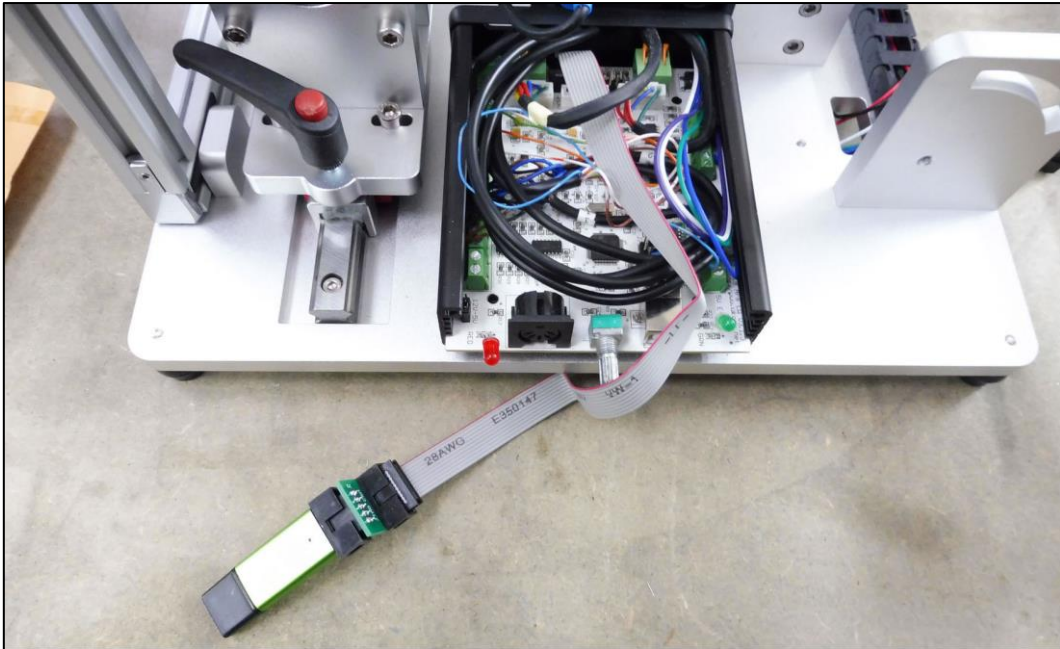
Pull the manual winder cap off.
Use a 10mm spanner to remove the Nut



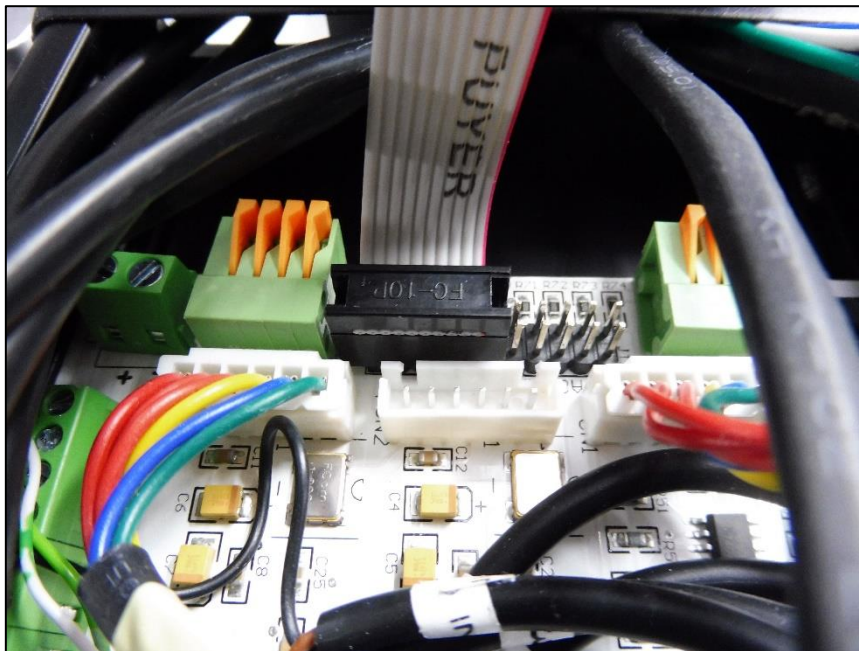
Remove the 4 screws on the front panel.



Pull the front panel off.
Then slide the lid out.



Connect the JTAG Programmer to the ribbon cable that's already attached to the controller board.

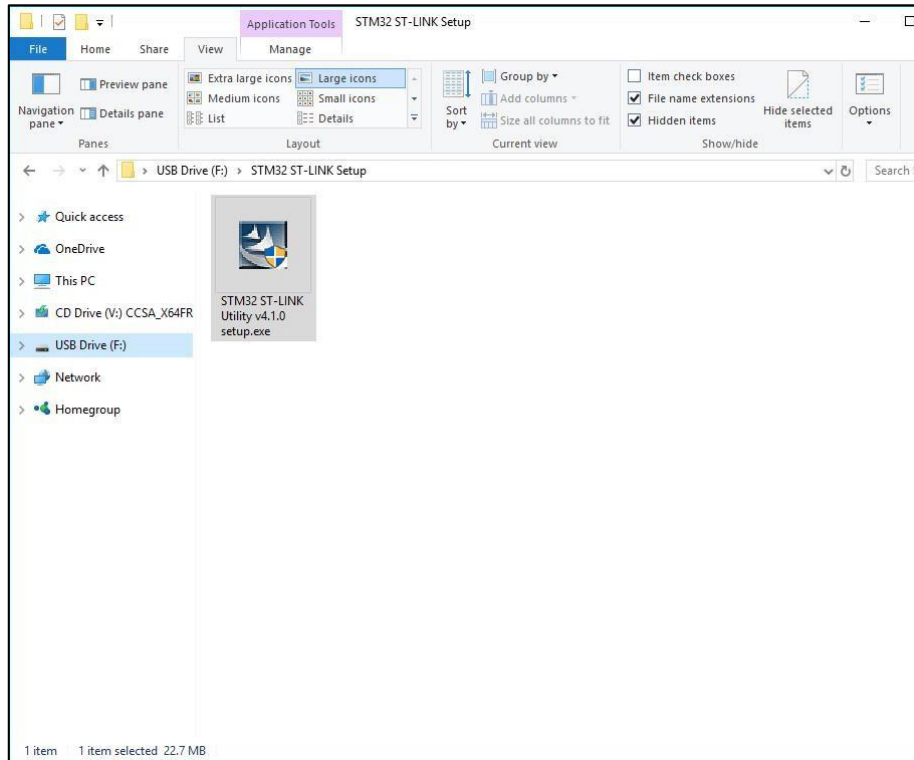


IMPORTANT: If the ribbon cable gets removed or is not connected to the ARM Controller, then you'll have to connect the ribbon cable to "JTAG ST" on the controller Board.

Ensure it's connected as shown above with the red line on the right side.

Please Note: If the JTAG programmer does not reach your PC, use a Male to Female USB Lead.

Installing STM32 ST-Link Utility and programming firmware

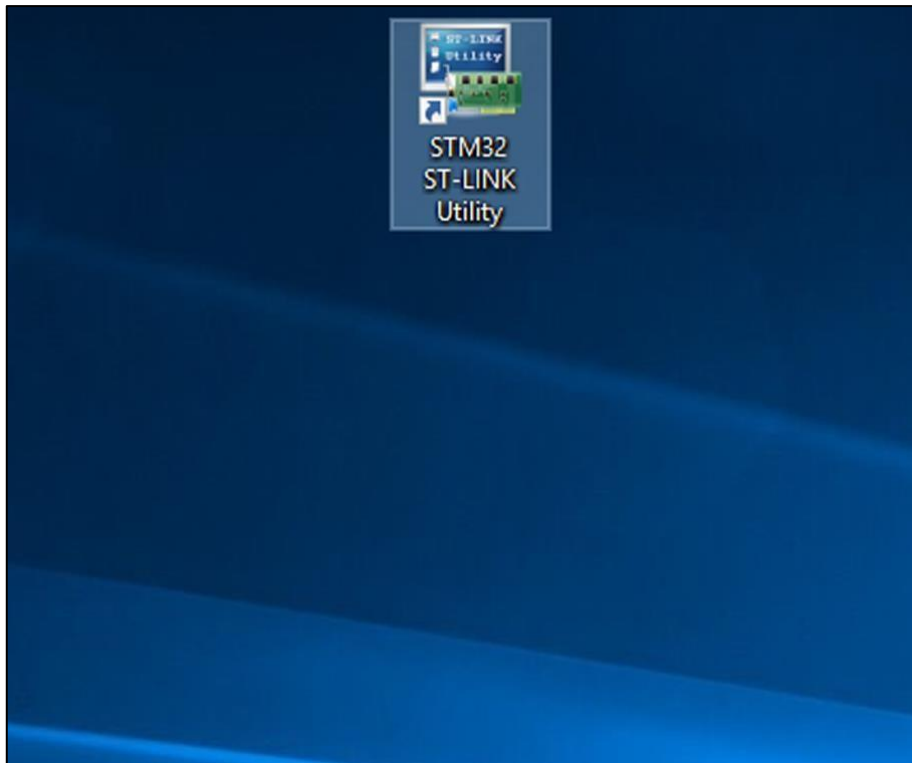


The STM32 ST-LINK Utility Setup Executable is located on the supplied USB memory stick as shown above.

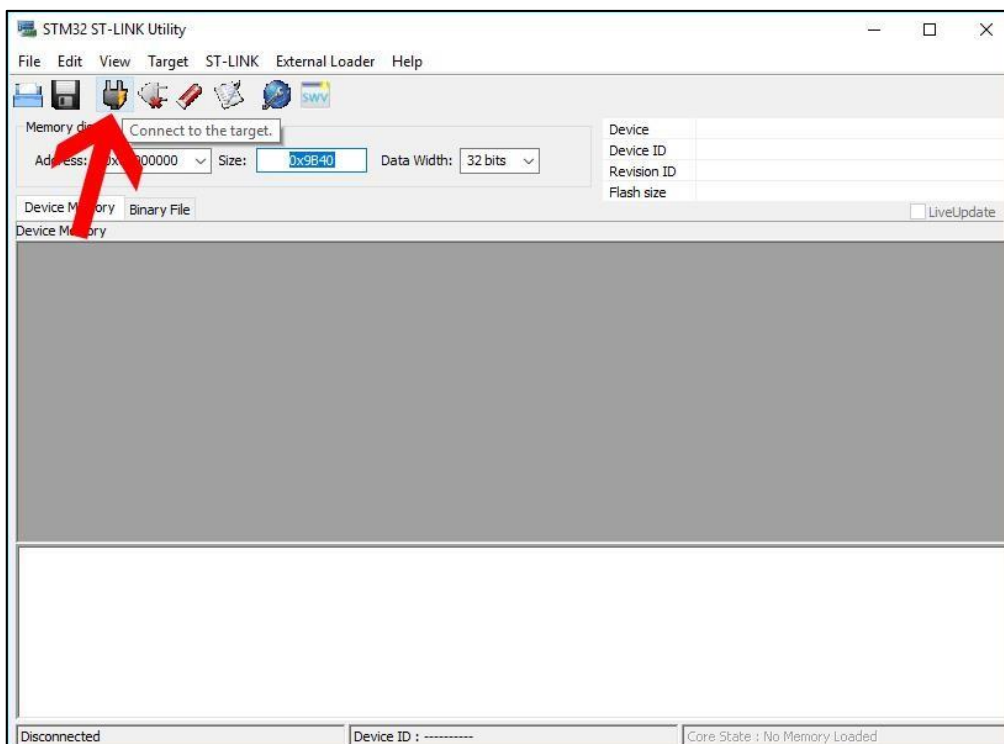
Follow the instructions on the wizard to install the Program.

Alternatively you can download the software via the official Website.

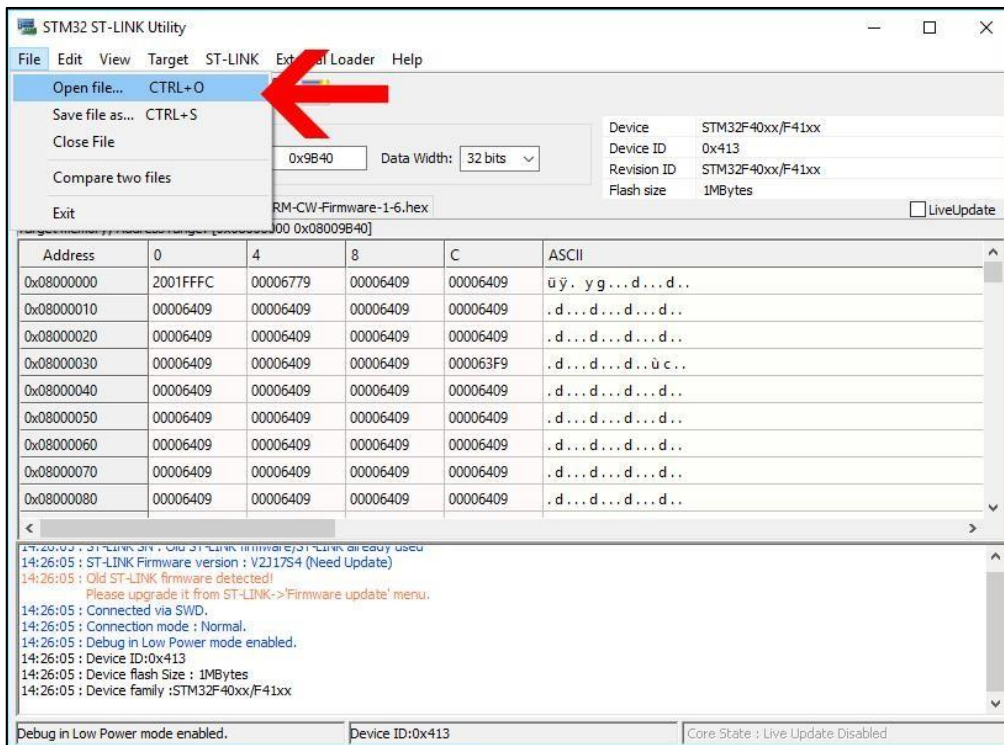
<http://www.st.com/en/development-tools/stsw-link004.html>



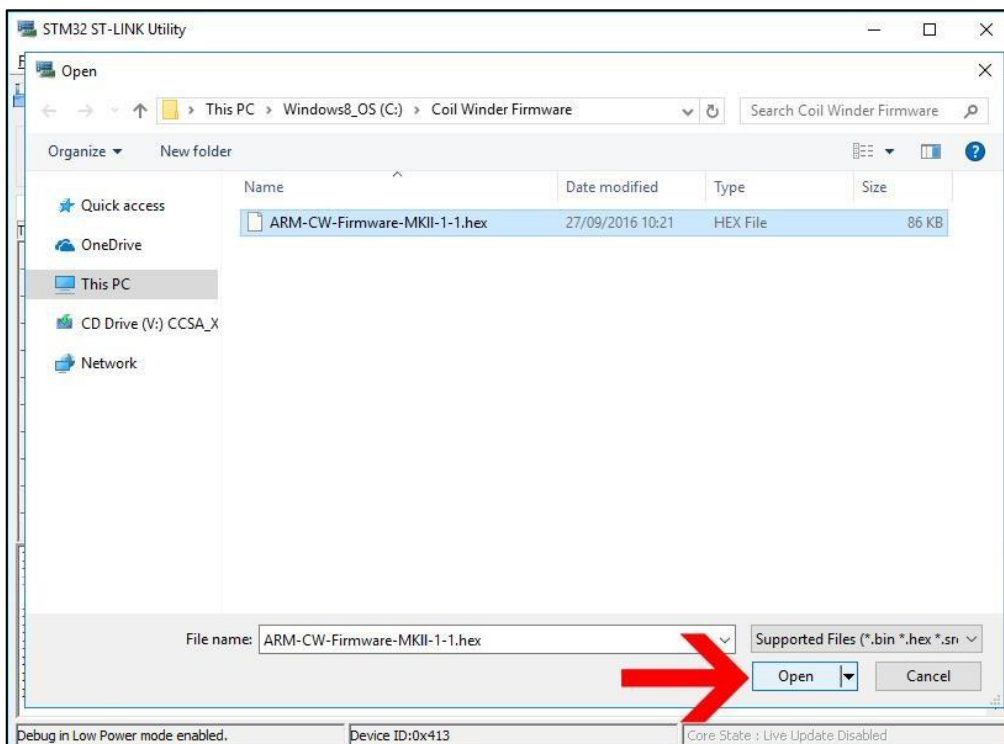
Once installed run the program.



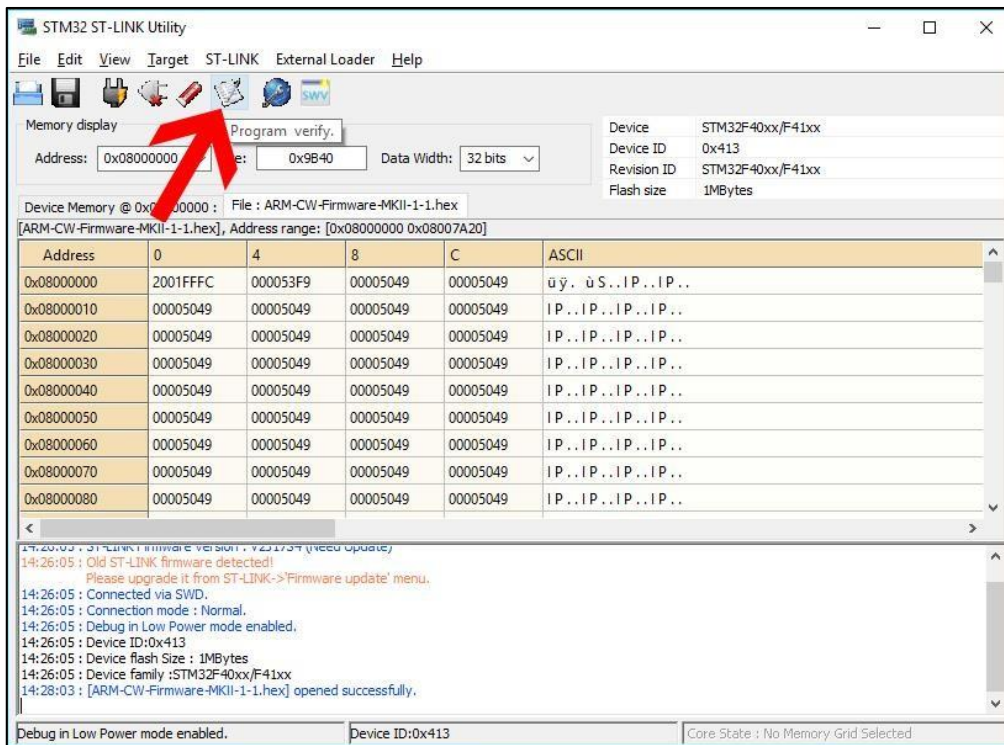
Ensure your JTAG Programmer is connected to your PC and click the Connect button.



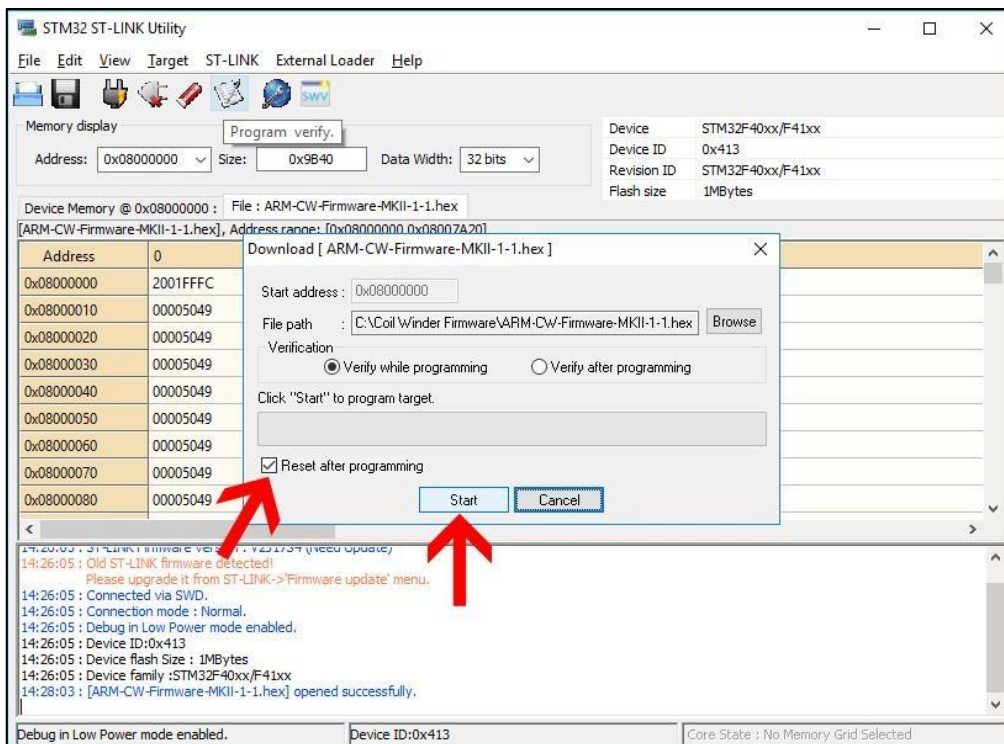
Along the top bar click “File” then select “Open file...” from the sub menu.



Locate the latest firmware file and click open.



Now click the Program Verify button.



Check the "Reset after programming" checkbox and click the start button.

STM32 ST-LINK Utility

File Edit View Target ST-LINK External Loader Help

Memory display

Address: 0x08000000 Size: 0x7A20 Data Width: 32 bits

Device: STM32F40xx/F41xx
 Device ID: 0x413
 Revision ID: STM32F40xx/F41xx
 Flash size: 1MBytes

Device Memory @ 0x08000000 : File : ARM-CW-Firmware-MKII-1-1.hex LiveUpdate

Target memory, Address range: [0x08000000 0x08007A20]

Address	0	4	8	C	ASCII
0x08000000	2001FFFC	000053F9	00005049	00005049	ü ý . ù S . I P . . I P . .
0x08000010	00005049	00005049	00005049	00005049	I P . . I P . . I P . . I P . .
0x08000020	00005049	00005049	00005049	00005049	I P . . I P . . I P . . I P . .
0x08000030	00005049	00005049	00005049	00005049	I P . . I P . . I P . . I P . .
0x08000040	00005049	00005049	00005049	00005049	I P . . I P . . I P . . I P . .
0x08000050	00005049	00005049	00005049	00005049	I P . . I P . . I P . . I P . .
0x08000060	00005049	00005049	00005049	00005049	I P . . I P . . I P . . I P . .
0x08000070	00005049	00005049	00005049	00005049	I P . . I P . . I P . . I P . .
0x08000080	00005049	00005049	00005049	00005049	I P . . I P . . I P . . I P . .

Please upgrade to the latest version of ST-LINK Utility from the firmware update menu.

14:26:05 : Connected via SWD.
 14:26:05 : Connection mode : Normal.
 14:26:05 : Debug in Low Power mode enabled.
 14:26:05 : Device ID:0x413
 14:26:05 : Device flash Size : 1MBytes
 14:26:05 : Device family :STM32F40xx/F41xx
 14:28:03 : [ARM-CW-Firmware-MKII-1-1.hex] opened successfully.
 14:29:45 : Memory programmed in 4s and 219ms.
 14:29:45 : Verification...OK

Debug in Low Power mode enabled. Device ID:0x413 Core State : Live Update Disabled

Once complete you should see a verification...OK message in your log and now your Coil winder has the latest Firmware.

Now re-assemble the coil winder following the beginning steps in reverse.