

CNC GUITAR PICKUP QUAD COIL WINDER MK2

INSTRUCTIONS

IMPORTANT: PLEASE READ THESE INSTRUCTIONS CAREFULLY TO ENSURE THE SAFE AND EFFECTIVE USE OF THIS MACHINE.





CONTENTS

Declaration Of Conformity	2
Specification	3
Warranty	3
Safety Warning.....	4
Maintenance	4
Getting To Know Your Coil Winder	5
Operation And Use.....	6-7
Installing Software	8 - 9

GENERAL INFORMATION

This manual has been compiled by CNC Design Ltd and is an integrated part of the product with which it is enclosed and should be kept with for future references.

This manual describes the purpose for which the product has been designed and contains all the necessary information to ensure its correct and safe use. We recommend that this manual is read before any operation or, before performing any kind of adjustment to the product and prior to any maintenance tasks. By following all the general safety instructions contained in this manual it will ensure both the product and operator safety, together with longer life of the product itself.

All photographs and drawings in this manual are supplied by CNC Design Ltd to help illustrate the operation of the product.

Whilst every effort has been made to ensure accuracy of information contained in this manual, the CNC Design Ltd policy of continuous improvement determines the right to make modifications without prior warning.

DECLARATION OF CONFORMITY



CERTIFICATE & DECLARATION OF CONFORMITY FOR CE MARKING

Company contact details:

CNC Design Limited
Unit 5S Lanvale Estate, St Columb Major Industrial Estate, Cornwall, TR9 6SF, England
Tel: +44 1637 881520 info@ukcnc.info

CNC Design Limited declares that their:

Desktop CNC Coil Winder Model: MK1x
Desktop CNC 200mm Coil Winder
Desktop Mini Coil Winder
Desktop CNC Quad Coil Winder

comply with the Essential Requirements of the following EU Directives:

Machinery Directive 2006/42/EC
Electromagnetic Compatibility Directive 2004/108/EC
EU RoHS 2 Directive 2011/65/EU

and further conform with the following EU Harmonized Standards:

EN ISO 12100:2010
EN 61000-6-3:2007+A1:2011
EN 61000-6-1:2007

Dated: 6 September 2020

Position of signatory: Director

Name of Signatory: Sean Hegarty

Signed below:

on behalf of CNC Design Limited

SPECIFICATION

The CNC Design Ltd policy of continuous improvement determines the right to change specification without notice.

Dimensions of base plate (L x W)	870mm x 400mm
Weight	38Kg
Maximum feeder travel	Approx. 100mm(35mm Between Bobbin plate & Tailstock)
Maximum Stepper motor RPM	1200RPM Recommended MAX
Maximum bobbin diameter (Height)	85mm
Wire range	0.01mm-0.3mm
Feeder max resolution	0.0005mm

WARRANTY

12 months Return to Base warranty is offered all assembled machines. This is on a Return to Base policy which means the customer will be liable to pay for the shipping of the faulty parts back to us and we will be liable for the cost of replacing and shipping back to the customer.

SAFETY WARNING

Keep hands clear of moving parts during operation.

Ensure all handles are fully tightened before operating.

Make sure the power is switched off before connecting the power supply.

MAINTENANCE

The machine has been designed to be low maintenance.

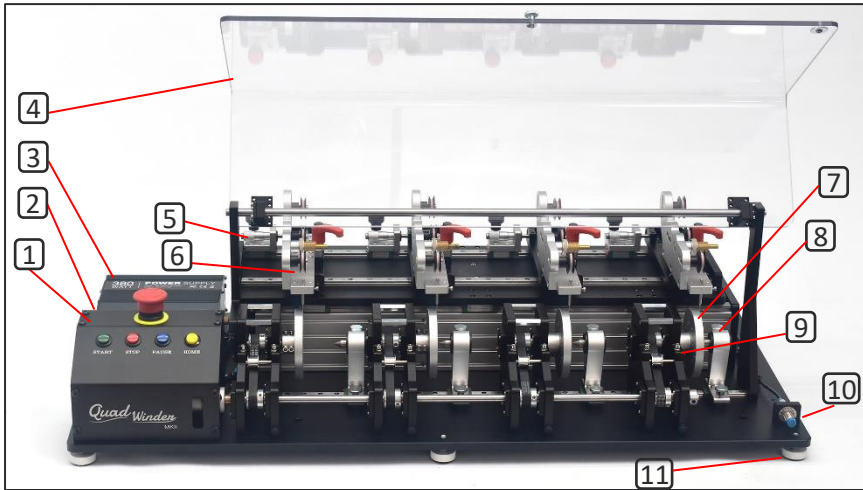
Your machine has been delivered lightly greased as such to keep the machine as clean as we can when assembling.

Please make sure to apply grease to the Ball screw and all the rails before running the machine too hard or fast.

Any moving parts such as the feeder ball screw and the tailstock rail need to be lightly greased periodically depending on use.

Check the tightness of all nuts and bolts.

GETTING TO KNOW YOUR COIL WINDER



1	Control Unit	7	Bobbin Plate
2	ARM MKII Controller	8	Tailstock
3	Power Supply	9	Belt tensioner
4	Safety Cover	10	Safety Cover Limit Switch
5	Feeder Assembly Positioning Micrometer	11	Adjustable Feet
6	Feeder Assembly		

OPERATION AND USE

Remove Machine from the crate, remove wrapping.



There are 4 push control buttons located at the front of the machine.

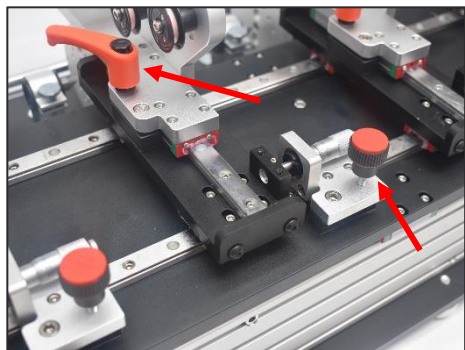
These are from left to right: Start, Stop, Pause and Home.

Also on top is the emergency stop button.



There are handles for each feeder assembly.

Use these to align each one to their bobbin plate.

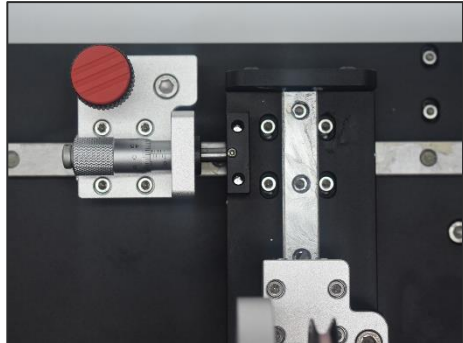


OPERATION AND USE

For Micro-adjustments use the Micrometer attached to each feeder assembly.

Take care when maneuvering these along the rail as too much force from collisions could break the micrometer.

DO NOT overtighten the red knob as this could cause a jam.

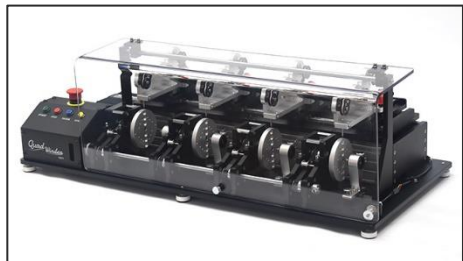


Connect the power supply to your Mains supply. (Red Arrow)

Insert the USB lead into the controller box. Then plug the other end of the USB into computer. (Blue Arrow)



All complete and ready to run up the software.

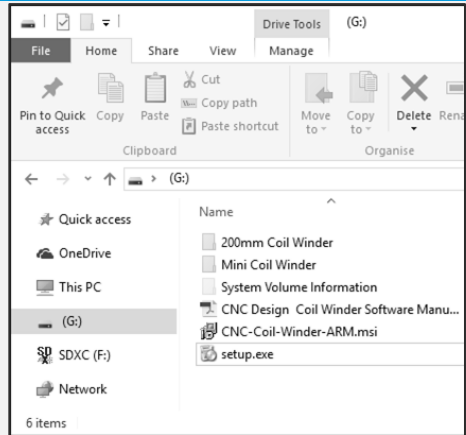


GENERAL INFORMATION

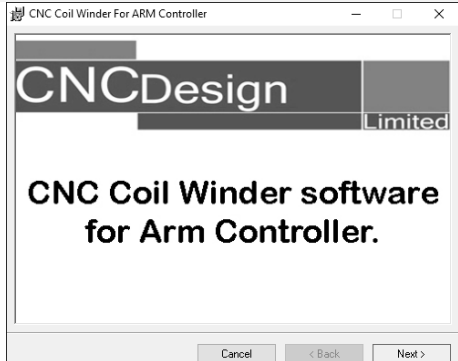
A Larger document with clearer instructions is located on the memory stick supplied.

INSTALLING SOFTWARE

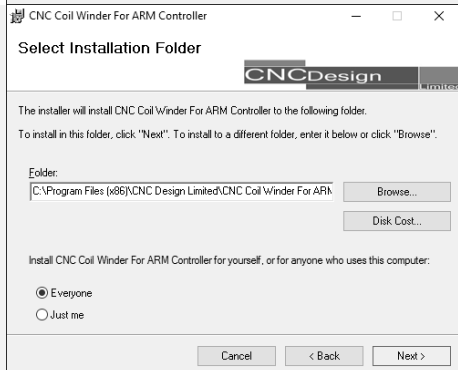
Insert the enclosed USB stick into your computer, browse to the device and run setup.exe.



Proceed through the wizard.

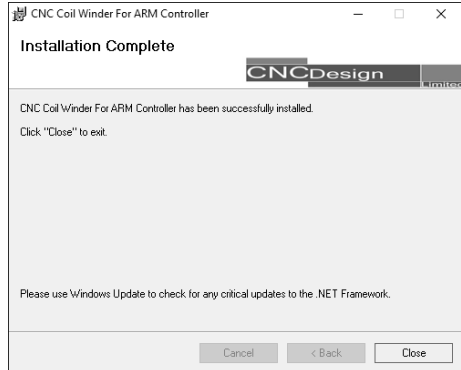


Here you can select the installation folder and choose to install this for multiple users or a single user.



INSTALLING SOFTWARE

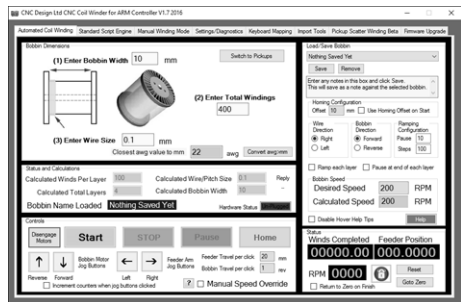
After installing the software click close.



Browse to your desktop for a new shortcut as shown.



All finished and ready to be used with your Coil Winder.





CONTACT DETAILS

CNC Design limited,
Unit 5S Lanvale Estate,
St. Columb Major,
Industrial Estate,
Cornwall,
TR9 6SF,
England

Telephone: +44(0) 1637 881520

Web: <http://www.ukcnc.net>

Email: info@ukcnc.net

©PUBLISHED BY CNC DESIGN LTD.

No part of this publication may be reproduced, stored in a retrieval system or transmitted in any form or by any means, electronic, mechanical photocopying, recording or otherwise without prior permission in writing from CNC Design Ltd.

NOTES

NOTES