



Unit 5S , Lanvale Estate, St. Columb Major Ind. Est, CORNWALL, TR9 6SF **Telephone:** 01637 881520

Upgrading your Mini Coil Winder MK1 to ARM Controller.

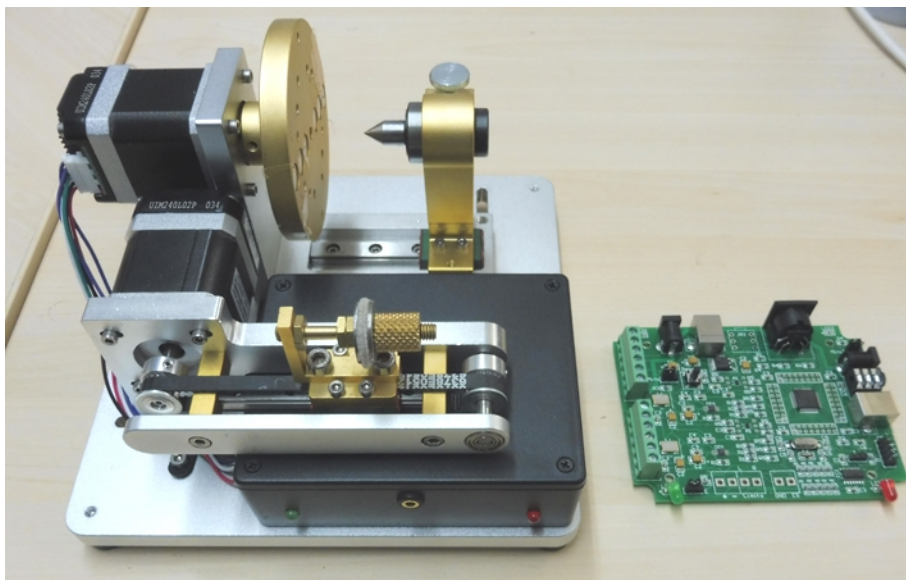
Version 1.0

17th June 2015.

This documentation applies for use of the software on the following machines:

- Mini Coil Winder MK1

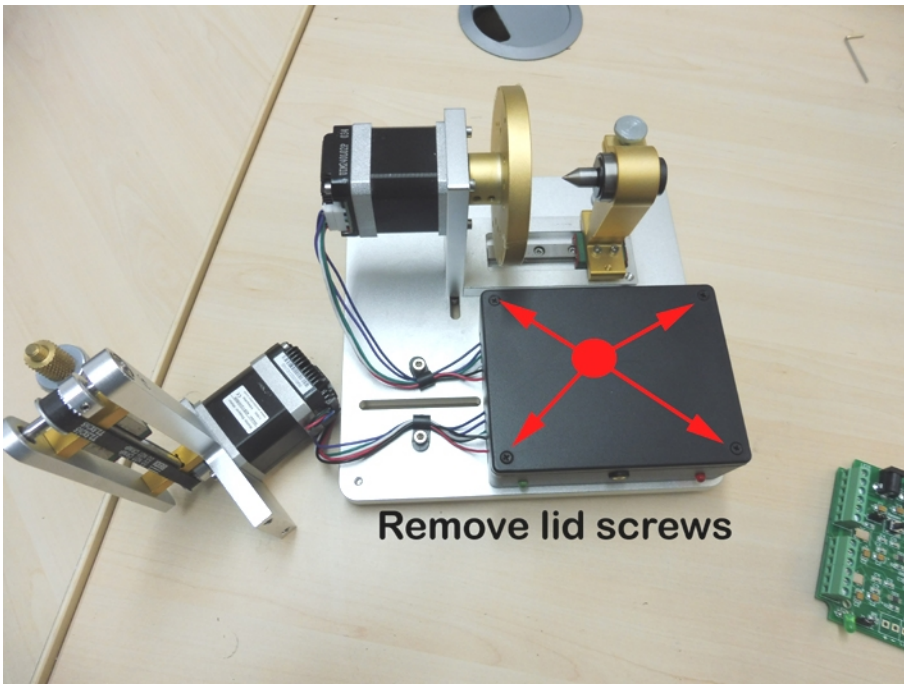
<http://www.ukcnc.net>



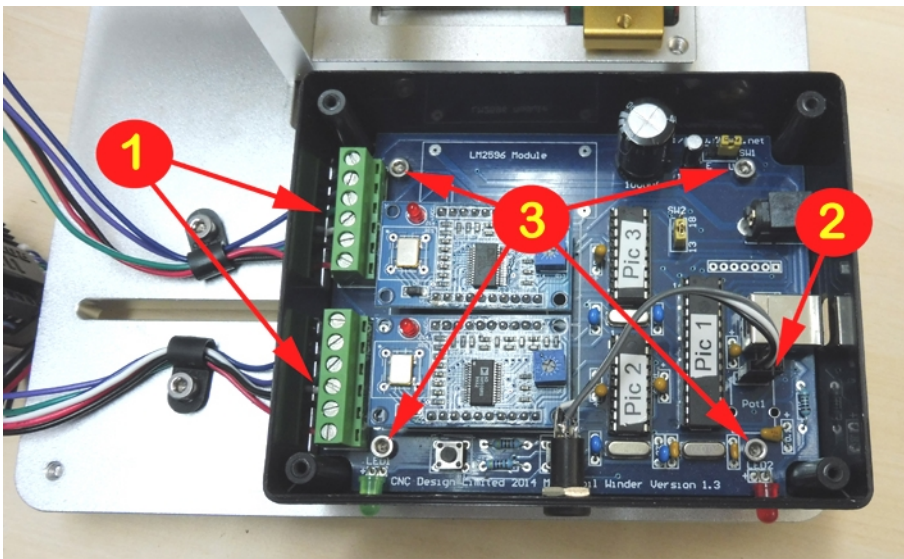
You will need your Mini Coil Winder MK1 and the new Arm Controller board.



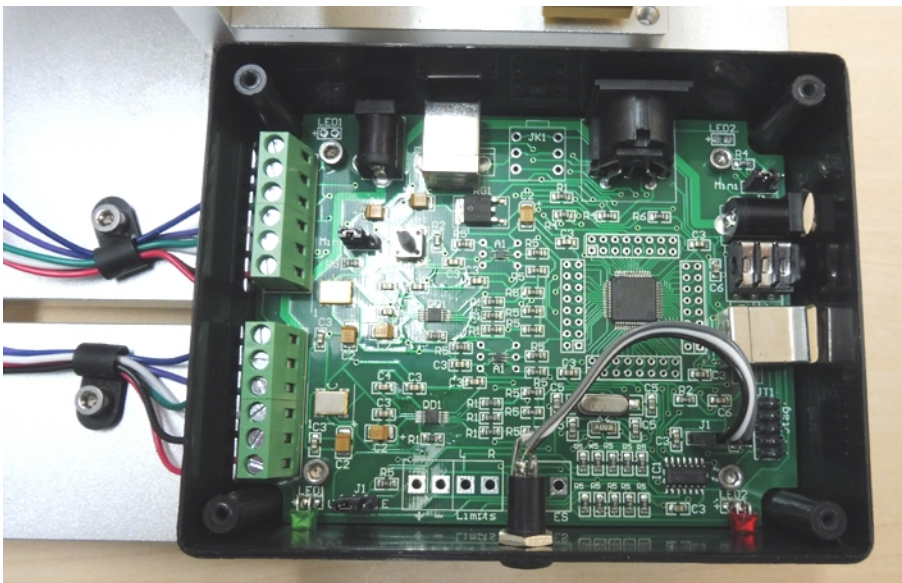
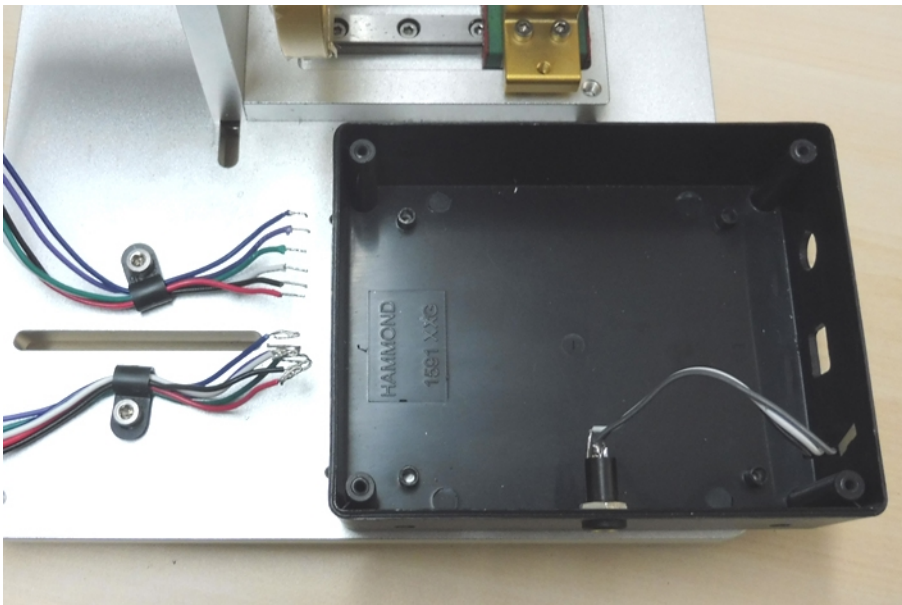
Place the machine on it's side remove the two M5 bolts.



You can now get to the lid screws easily.

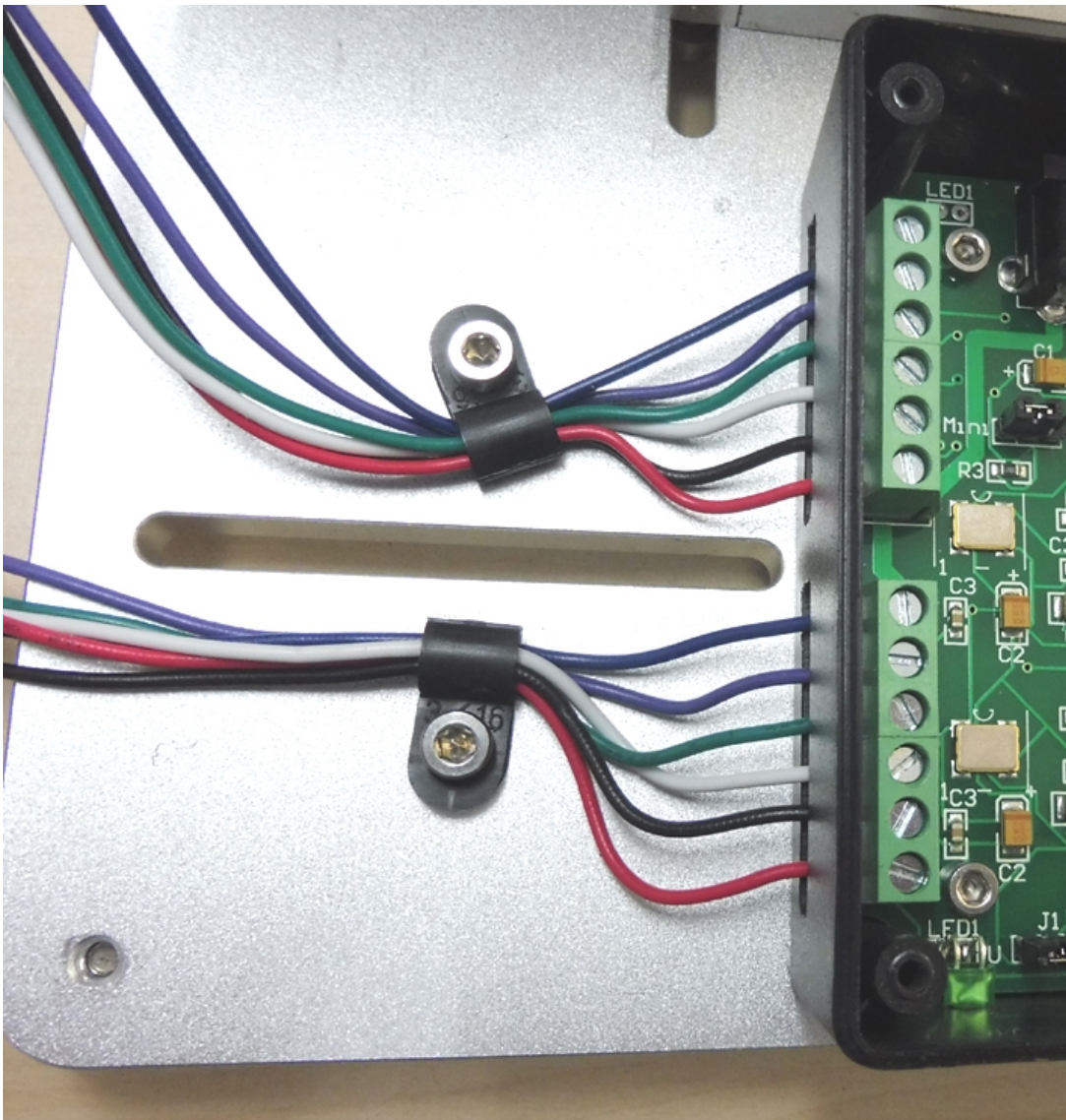


- Disconnect wires
- Disconnect 3pin plug
- Remove bolts

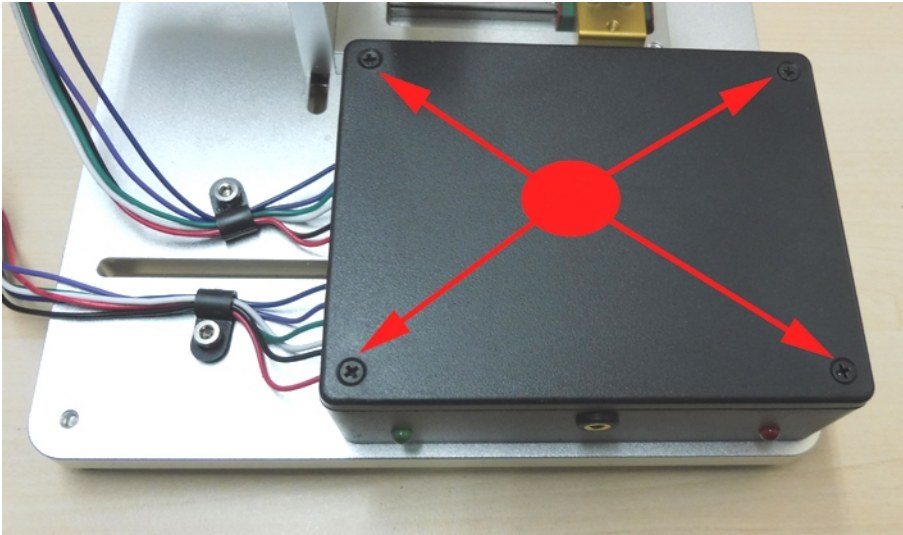


**Place in new ARM Controller.
Screw in place and re-attach wires and
connector.**

If you find the Manual Controller Dial is working the wrong way around then simply turn the 3 pin connector around.

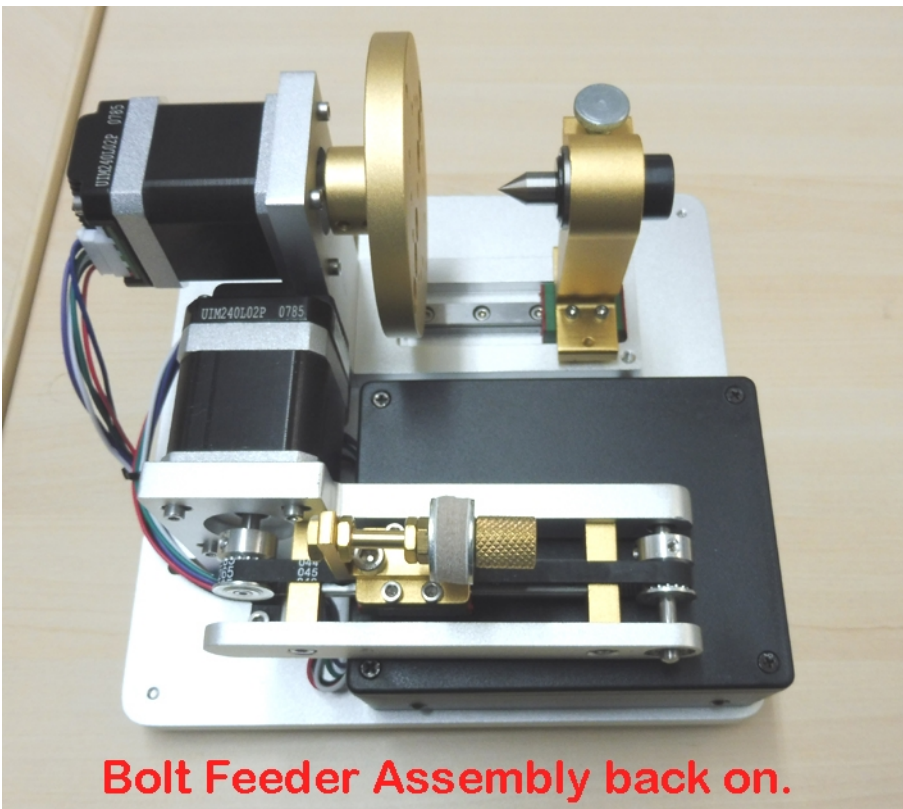


Wires colours should be connected as shown.



Now simply reverse the process by screwing the lid back on.

And bolting the Feeder assembly back in place.



All done !