

CNC MINI COIL WINDER MK6

INSTRUCTIONS

IMPORTANT: PLEASE READ THESE INSTRUCTIONS CAREFULLY TO ENSURE THE SAFE AND EFFECTIVE USE OF THIS MACHINE.



CONTENTS

Declaration Of Conformity.....	2
Specification.....	3
Warranty.....	3
Getting To Know Your Coil Winder	4
Operation and use	5-9
Installing Software	10-11
Safety Warning.....	12
Maintenance	12
Contact details	13

GENERAL INFORMATION

This manual has been compiled by CNC Design Ltd and is an integrated part of the product with which it is enclosed and should be kept with for future references.

This manual describes the purpose for which the product has been designed and contains all the necessary information to ensure its correct and safe use. We recommend that this manual is read before any operation or, before performing any kind of adjustment to the product and prior to any maintenance tasks. By following all the general safety instructions contained in this manual it will ensure both the product and operator safety, together with longer life of the product itself.

All photographs and drawings in this manual are supplied by CNC Design Ltd to help illustrate the operation of the product.

Whilst every effort has been made to ensure accuracy of information contained in this manual, the CNC Design Ltd policy of continuous improvement determines the right to make modifications without prior warning.

DECLARATION OF CONFORMITY



CERTIFICATE & DECLARATION OF CONFORMITY FOR CE MARKING

Company contact details:

CNC Design Limited
Unit 5S Larvale Estate, St Columb Major Industrial Estate, Cornwall, TR9 6SF, England
Tel: +44 1637 881520 info@ukcnc.info

CNC Design Limited declares that their:

Desktop CNC Coil Winder Model MK1x
Desktop CNC 200mm Coil Winder
Desktop Mini Coil Winder

comply with the Essential Requirements of the following EU Directives:

Machinery Directive 2006/42/EC
Electromagnetic Compatibility Directive 2004/108/EC
EU RoHS 2 Directive 2011/65/EU

and further conform with the following EU Harmonized Standards:

EN ISO 12100:2010
EN 61000-6-3:2007+A1:2011
EN 61000-6-1:2007

Dated: 17 February 2015

Position of signatory: Director

Name of Signatory: Sean Hegarty

Signed below:

on behalf of CNC Design Limited

SPECIFICATION

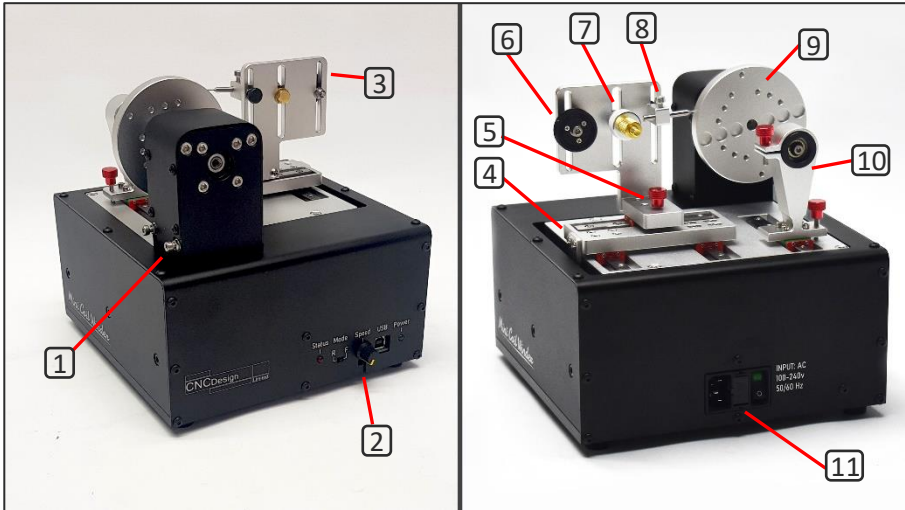
The CNC Design Ltd policy of continuous improvement determines the right to change specification without notice.

Dimensions of base plate (L x W)	220mm x 220mm
Weight	9Kg
Maximum feeder travel	40mm
Maximum Stepper motor RPM	2500 RPM (2000 RPM recommended MAX)
Maximum bobbin diameter	110mm
Wire range	0.02mm-0.1mm
Feeder max resolution	0.0025mm

WARRANTY

12 months Return to Base warranty is offered all assembled machines. This is on a Return to Base policy which means the customer will be liable to pay for the shipping of the faulty parts back to us and we will be liable for the cost of replacing and shipping back to the customer.

GETTING TO KNOW YOUR COIL WINDER



1	Belt Tensioner	7	Felt Tensioner Pads
2	Controller Panel	8	Nozzle
3	Wire Guide Assembly	9	Bobbin Wheel
4	Feeder	10	Tailstock
5	Feeder Positioning Handle	11	Power Input
6	Wire Guide Pulley		

OPERATION AND USE

The Mini Coil Winder has a USB socket, dial and a switch on one side. On the other side of the machine is a fuse protected IEC Panel with an inline switch.

The switch at **Arrow 1** determines the controller's functional state.

- Right (F) - Firmware mode: Used for applying firmware updates.
- Left (R) – Running mode: Used to interact with the software.

The dial at **Arrow 2** is the manual speed control. To use the Manual Speed, you still need to first run up the software and choose Manual Control.

The machine is supplied with a USB A-B lead. Connect the B plug side into **Arrow 3** as shown in the picture.

The IEC Port at **Arrow 4**, is the input for the 100-240v AC supply.

The Fuse Holder is located at **Arrow 5** this contains a 5A Fuse.

Arrow 6 is the switch to power the machine.

If you are outside the UK then you can either cut the plug off and fit a plug to suit your AC outlet or use a lead that you may already have.

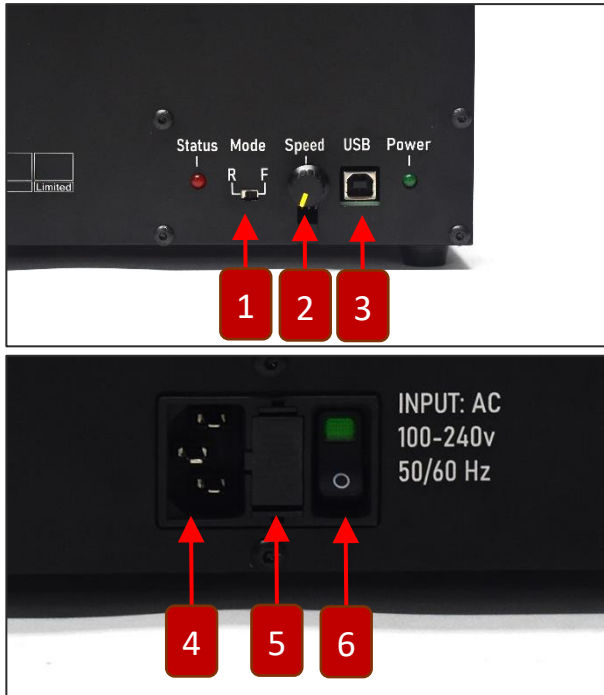
Please note that the controller board is powered from the 5V USB socket on your computer. The motors on your machine are powered from the internal 24V DC Power Supply.

The green LED on the front of the controller box shows that we have power from the USB port to the controller board.

GENERAL INFORMATION

A Larger document with clearer instructions is located on the memory stick supplied.

OPERATION AND USE



- 1 Selection mode switch – Left: Running, Right: Firmware
- 2 Manual Speed Controller
- 3 Connection point for USB Lead
- 4 IEC Socket for internal Power Supply
- 5 Inline Fuse Holder
- 6 Inline Power Switch

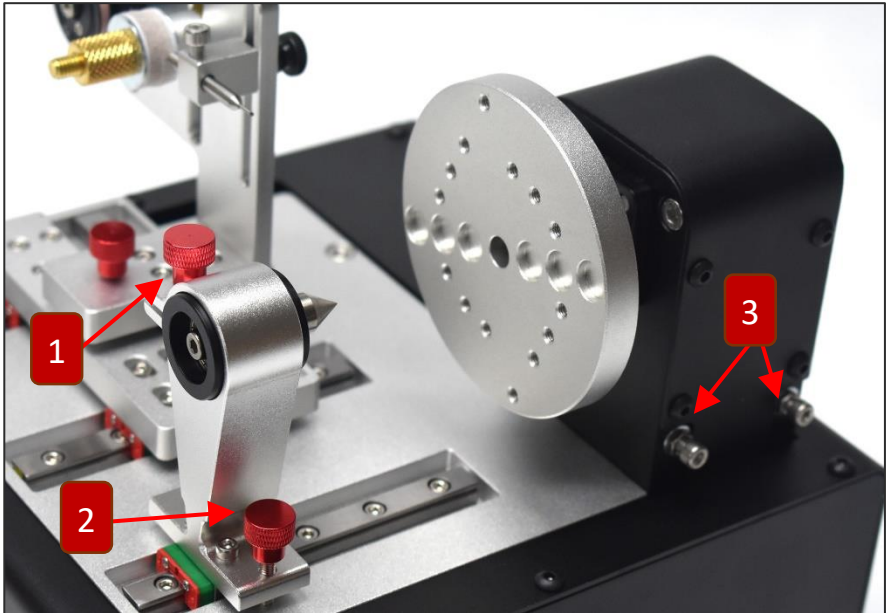
OPERATION AND USE



The whole machine is fully adjustable and has been pre-aligned. This section will inform you on how to adjust these areas starting with the Wire Guide Assembly:

1. **Porcelain Pulley:** M4 Nut on the back.
2. **Felt Pad:** M6 brass Bolt and the hidden Nut under the spacer.
3. **Nozzle holder:** Black Handle and M4 Bolt.
4. **Wire Guide Assembly:** Red Handle.

OPERATION AND USE



The Tailstock can be adjusted using the two red handles and also the belt tension can be adjusted:

1. **Tailstock Guide:** Red Handle.
2. **Tailstock Assembly:** Red Handle
3. **Belt Tension:** 2x M4 Nuts and Bolts.

Note: The Belt Tension should only be adjusted after an extended amount of use.

OPERATION AND USE

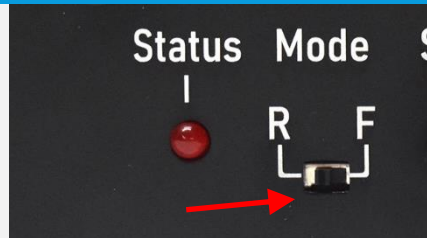
First, check that the controller's selection mode is set to running.

The switch should be pushed to the Left.

Connect the USB lead. Then plug the USB into the computer.

Connect the AC Supply and flick the power switch, the green light on the switch indicates Power.

All complete and ready to run up the software and test.

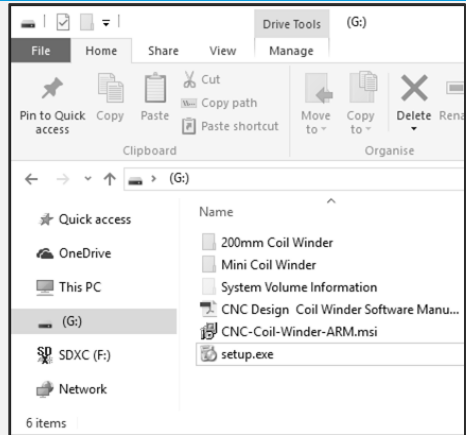


GENERAL INFORMATION

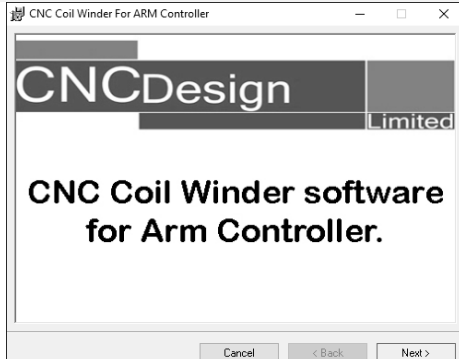
A Larger document with clearer instructions is located on the memory stick supplied.

INSTALLING SOFTWARE

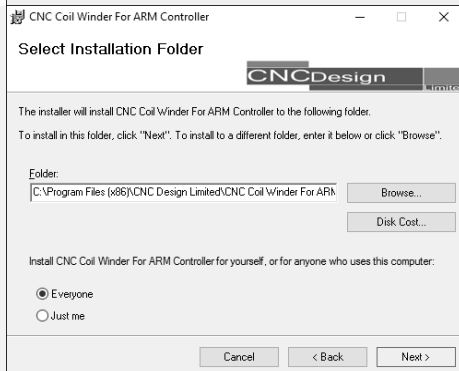
Insert the enclosed USB stick into your computer, browse to the device and run setup.exe.



Proceed through the wizard.

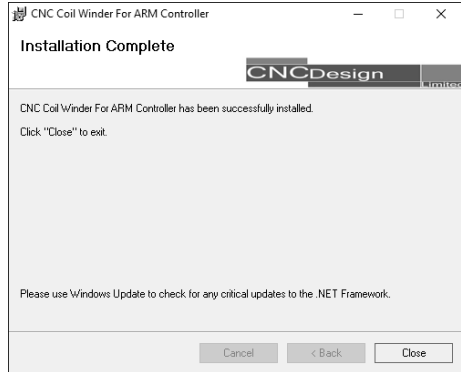


Here you can select the installation folder and choose to install this for multiple users or a single user.



INSTALLING SOFTWARE

After installing the software click close.

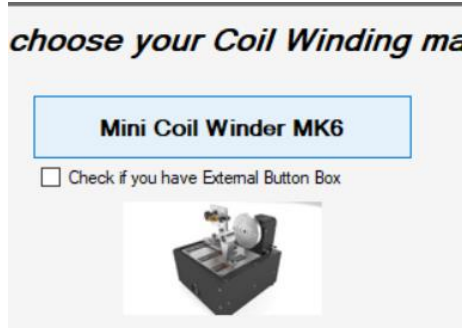


Browse to your desktop for a new shortcut as shown.



Upon start-up of the software, you'll be asked if you have an External Button Box.

Leave this checkbox unticked and then click the Mini Coil Winder MK6 button above it.



SAFETY WARNING

Keep hands clear of moving parts during operation.

Ensure the bobbin is attached securely to the plate and the tailstock is fully locked down before operating.

Make sure the power is switched off before connecting the power supply to the DC power box.

MAINTENANCE

The machine has been designed to be low maintenance.

Most of your machine has been delivered dry as to keep the machine as clean as we can when assembling.

The internal moving parts such as the Ballscrew have been heavily greased as to prevent the need to open the enclosure.

Any moving parts such as the feeder and tailstock rails need to be lightly greased periodically depending on use.

Check the tightness of all nuts and bolts.



CONTACT DETAILS

CNC Design limited,
Unit 5S Lanvale Estate,
St. Columb Major,
Industrial Estate,
Cornwall,
TR9 6SF,
England

Telephone: 01637 881520
Web: <http://www.ukcnc.net>
Email: info@ukcnc.net

©PUBLISHED BY CNC DESIGN LTD.

No part of this publication may be reproduced, stored in a retrieval system or transmitted in any form or by any means, electronic, mechanical photocopying, recording or otherwise without prior permission in writing from CNC Design Ltd.